

## Local 232 News

By: Mavis Vet

Welcome to the first newsletter for Local 232. We designed this letter to reflect what is happening and keep our members informed about events in our local area. This is your newsletter and we welcome any input from you.

The design is simple with a bit of Regional/Head Office news, combined with some stories of interest. We invite you to submit something such as some news, challenges, community fun stuff you are involved in, anniversaries, retirements, etc. There will be a section to answer questions from our members, as well as a "Did You Know" trivia section.

You'll also find current news from the Union with links and other news from Division and Region.

## National News

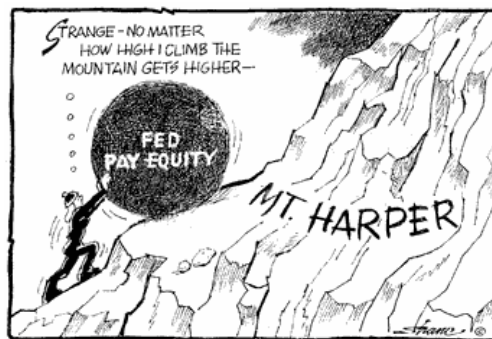
### Women charge Harper government destroying right to pay equity

Agenda/OECTA/CALM

Representatives of women's groups and labour unions gathered at the United Nations recently to announce that they are filing a complaint against the Harper government with the UN Commission on the Status of Women.

The complaint condemned the Canadian government for rushing controversial pay

equity legislation through Parliament that will make it extremely difficult for women in the federal public sector to demand equal pay for work of equal value.



The "notice of communication" to the UN was signed by representatives of more than 40 organizations, including the Canadian Teachers' Federation, Public Service Alliance of Canada, the Syndicat de la fonction publique du Québec, the Canadian Federation of Nurses Unions and the Feminist Alliance for International Action.

In addition to criticizing the negative pay equity strategy in the Budget Implementation Act, it also took aim at the 2009 federal budget for failing to fix the employment insurance system during a time of economic crisis.

### Links of Interest:

OPSEU: <http://www.opseu.org/>

Region 2: <http://www.opseuregion2.org/Welcome.html>

Local 232: <http://www.opseu232.org/>

General Information:

[http://www.opseu.org/op\\_links/op\\_links.htm](http://www.opseu.org/op_links/op_links.htm)

## **Editorial Policy**

The content and editing of this newsletter are determined by the editor. We want members to take ownership of their newsletter. Content comes from our base of activists and other labour sources.

Where the article has a by-line, the views are those of the author and not necessarily the views of this Local or OPSEU.

We encourage thoughtful discussion of all related issues and reserve the right to edit for libel, length and clarity, and to reply to those that seem to reflect a misunderstanding of the union and its policies.

The editorial committee is:

Editor – Mavis Vet – OMAFRA

Copy Editor – Jennifer Aitkens - OMAFRA



If you would like to submit an article or event, please send them to the editor by noon on the third Thursday of the month. Our e-mail address is: [232newsletter@gmail.com](mailto:232newsletter@gmail.com).

## **Did you know?**

(Union history or questions raised by the members)  
OPSEU

In 1910, the Civil Service Association of Ontario was created as a coal-buying cooperative and social club, and to discuss ways of improving the civil service. About 200 attend the initial meeting. Women were not invited. The members agree to get the government's approval before proceeding further. The provincial government then had about 1,000 employees. Salaries were set by the Lieutenant Governor. Pay increased with service, and long-term employees got first crack at promotions. There was no overtime. Ministers could fine staff up to \$20 for misbehaviour. There was no appeal. There was no retirement age. A pension of one month's salary a year was granted to old-timers let go for ill health and widows of career officials.

## **Introducing your Executive**

### **President**

Doug Peebles – MNR – [doug.peebles@ontario.ca](mailto:doug.peebles@ontario.ca)

### **Vice President**

Jacqueline Smith – AG – [jacqueline.smith@ontario.ca](mailto:jacqueline.smith@ontario.ca)

### **Stewards**

Andrea Gomirato – OMAFRA – [andrea.gomirato@ontario.ca](mailto:andrea.gomirato@ontario.ca)

Emily Hitchcock – OMAFRA – [emily.hitchcock@ontario.ca](mailto:emily.hitchcock@ontario.ca)

Lisa Kenny – OMAFRA – [lisa.kenny@ontario.ca](mailto:lisa.kenny@ontario.ca)

Phil Regli – OMAFRA – [phil.regli@ontario.ca](mailto:phil.regli@ontario.ca)

Peter Roberts – OMAFRA – [peter.roberts@ontario.ca](mailto:peter.roberts@ontario.ca)

Kathleen Salazar – OMAFRA – [Kathleen.salazar@ontario.ca](mailto:Kathleen.salazar@ontario.ca)

Mavis Vet – OMAFRA – [mavis.vet@ontario.ca](mailto:mavis.vet@ontario.ca)

Bonnie Roszell – AG – [bonnie.roszell@ontario.ca](mailto:bonnie.roszell@ontario.ca)

Marnie Neville – MCSCS – [marnie.neville@ontario.ca](mailto:marnie.neville@ontario.ca)

Jan Wyman – MCS – [jan.wyman@ontario.ca](mailto:jan.wyman@ontario.ca)

Cameron Hall – MOE – [cameron.hall@ontario.ca](mailto:cameron.hall@ontario.ca)

Khaleed Khalfan – MOE – [khaleed.khalfan@ontario.ca](mailto:khaleed.khalfan@ontario.ca)

Carola Serwotka – MOE – [carola.serwotka@ontario.ca](mailto:carola.serwotka@ontario.ca)

Michael Foucault – MGS – [michael.foucault@ontario.ca](mailto:michael.foucault@ontario.ca)

John Haskett – MGS – [john.haskett@ontario.ca](mailto:john.haskett@ontario.ca)

Mitch Nagel – MGS – [mitch.nagel@ontario.ca](mailto:mitch.nagel@ontario.ca)

Linda Dennison – MNR – [linda.dennison@ontario.ca](mailto:linda.dennison@ontario.ca)

Linda Freeman – MNR – [linda.m.freeman@ontario.ca](mailto:linda.m.freeman@ontario.ca)

## **News from each section of the Local**

In this section we would like the different ministries to supply some stories and/or pictures of events that they would like to share with the rest of the local. Examples include retirement parties, dress down day for charity or anything that would be of interest to share with even your own colleagues. This is your opportunity to spotlight events in your ministry. A catchy headline would show your ministry's fun side.

Some examples:

### **From the Courts**

### **What's the talk from Parole?**

# BEST WISHES TO OUR RETIREES!



## Curiosity got the Union Steward involved!

By: Doug Peebles, President

Friday May 22 marked a special day for Carolyn Vining; it was a day that she had been counting down to – “RETIREMENT from the OPS”!

Carolyn’s career spans 20 years working as a Systems Officer. She started out in Community and Social Services (CSS) at the Midwestern Regional Centre near Listowel for the first eight years before coming to work for the Ontario Ministry of Agriculture, Food and Rural Affairs (OMAFRA) for about nine years, and she finished up in Government Services (GS) for the last three years.

During her time at OMAFRA, Carolyn spent four years supporting field offices in Clinton, Stratford and Walkerton before being transferred to 1 Stone Road in Guelph. Her greatest challenge came in the spring of 2000 when Carolyn was called upon to set

up a temporary office computer network for the Ministry of Environment in Walkerton at the height of the water tragedy.

It was during the second half of her time with CSS that Carolyn got curious about the Union as she puts it. She had heard lots of different things she wasn’t sure about, so she decided to check it out for herself to get the factual information, and ended up becoming a Steward to help inform the membership at work. It was at a Local 232 general membership meeting while with OMAFRA at 1 Stone Road in 2002 that Carolyn took that next step as a Union Steward in being elected as a delegate to the OPS (OMAFRA) Divisional meeting. At that meeting, Carolyn stood as an Alternate to the Ministry Employees Relations Committee (MERC) for OMAFRA.

Carolyn’s involvement in MERC led to participating as a member of the OMAFRA 1 Stone Road Local Employees Relations Committee (LERC), and finishing up as Co-Chair of the 1 Stone Road MGS LERC. This is where Carolyn’s true passion started to evolve in helping people. Her prime objective was in fostering a “good working environment or as win-win for everyone.” Carolyn was impressed by “What the Union (OPSEU) can and will do for you in supporting members through whatever challenges they may face in the workplace.” Carolyn recalls assisting a member through some personal challenges that were impacting that person’s work performance. It was very life changing for the member, who managed to persevere with Carolyn’s support as their Steward. “It was very rewarding to end up with a win-win for the member.”

Carolyn says she’ll take her IT skills and experience as a Steward into retirement with her to apply it to her volunteer work with “Run for the Cure.” Most of her retirement will be spent gardening (redoing her yard), reading, sewing and enjoying her three grandchildren.

We (Local 232) would like to thank Carolyn for all her contributions as a Steward in assisting members. We wish Carolyn all the best during her well-earned retirement.

## Helpful Hints

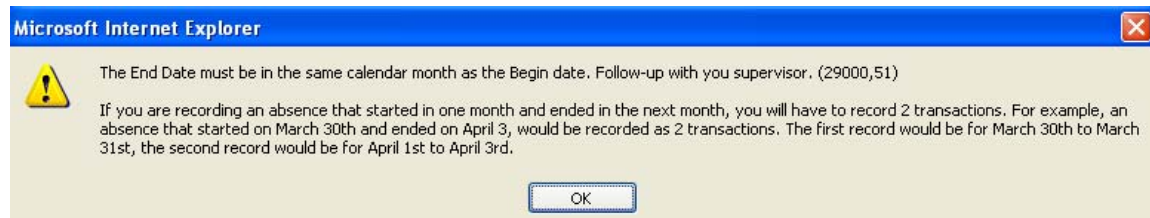
When you enter your attendance in WIN – you cannot enter an absence that crosses over the end of a calendar month.

**Example:** Scenario:

Vacation booked – week beginning Monday March 30<sup>th</sup> through to Friday April 3<sup>rd</sup>.

2 2009/03/30 7.25 2009/03/30 2009/04/03 5.0 0.000 Pending + -

When you try to save it – it will prompt you like this:



2 2009/03/30 7.25 2009/03/30 2009/04/03 5.0 0.000 Pending + -

Correct entry would be

2009/03/30 7.25 2009/03/30 2009/03/31 2.000 2.000 Pending + -  
2009/03/30 7.25 2009/04/01 2009/04/03 3.000 3.000 Pending + -

## Ask the President

For benefits to continue after retiring, do you need 10 years of continuous service or does 10 years of non-continuous service qualify?

Taken from: A Guide to Your Benefits after Retirement

**OPS Retiree Insured Benefits** You are entitled to insured benefits coverage if you meet one of the following criteria:

**Eligibility Criteria** a) you are receiving a pension from OPSEU Pension Trust (OPT), and have credit of at least ten years in the pension plan, **or** b) you are receiving a pension from the OPSEU Pension Trust based on at least ten years of continuous service and have credit in the OPSEU Pension Trust for at least some part of each of those ten years.

Your coverage continues as long as you are in receipt of a pension from the OPT. Coverage will apply to your eligible dependents as defined in the booklet “A Guide to Your Benefits After Retirement”.

When you die, coverage will continue to apply to your eligible surviving spouse and/or eligible dependent children provided your spouse or eligible dependents qualify for and are in receipt of a survivor pension.

## Some Summer Fare:

### Angel Cake with Strawberries & Citrus Cream

Dairy Farmers of Ontario

#### Ingredients:

Naturally luscious whipped cream spiked with fresh-tasting citrus dresses up Angel Food cake and strawberries with ease. Toasting the cake enhances the flavor and texture.

- 1 cup (250 mL) 35% whipping cream
- 2 tbsp (25 mL) icing sugar
- 1 tsp (5 mL) grated orange zest
- 1/2 tsp (2 mL) grated lemon zest
- 1/2 tsp (2 mL) vanilla
- 12 slices Angel Food cake, each 3/4-inch (2 cm) thick
- 2 cups (500 mL) sliced strawberries
- 6 thin strips orange zest (optional)

#### Preparation:

In a chilled bowl, whip cream until thick. Beat in icing sugar just until soft peaks. Beat in orange and lemon zest and vanilla just until stiff peaks. (Cream can be covered and refrigerated for up to 8 hours. Whisk lightly before serving).

Preheat broiler. Place cake slices on a baking sheet. Toast under the broiler, turning once and rotating baking sheet as necessary, for 1 to 2 min per side or just until golden.

Place 1 slice of cake on each serving plate. Top with a dollop of the whipped cream; spoon strawberries on top. Top with another slice of cake, remaining cream **and** then strawberries. Garnish with strips of orange zest, if desired.

#### Tips:

Use a store-bought cake or one made from your favourite recipe. Extra Angel Food cake freezes well for up to 3 months so you can have it on hand to make this dessert any time.

Serves: 6      Preparation Time 15 minutes

Cooking Time: 2-4 minutes

## Fun Stuff:



### Guelph and District Labour Council's Labour Day Picnic September 7, 2009

This year the G&D Labour Council's picnic will be sponsored solely by Labour. This is an event to showcase labour in Guelph and Wellington County. They are looking for anyone who would like to help in the planning and on the day of the event. If you would like to volunteer at this event please contact Mavis Vet at [mavisvet@hotmail.com](mailto:mavisvet@hotmail.com).

### 1<sup>st</sup> Annual Local 232 Golf Tournament

The Local's treasurer would like to set up a golf tourney. If anyone is interested in helping you can contact Bonnie Roszell at [broszell@sympatico.ca](mailto:broszell@sympatico.ca).



### Dates of interest:

Last chance to sign up for the Region 2 Educational on June 6-7, 2009.

Next Region 2 Educational is scheduled for October 17-18, 2009.

Grand Opening of the Guelph Regional Office is still to be announced.

Please feel free to pass this newsletter on to fellow OPSEU members. If you would like to receive a copy via e-mail, please send your e-mail address to [232newsletter@gmail.com](mailto:232newsletter@gmail.com).